

# NATURE CREATIVE

N A T U R E F O R E V E R Y O N E

## OUR 2022 VISION

To introduce a Digital Archive and Shopping Platform that celebrates NATURE in a new and exciting way. We want to fill the world with beauty and add NATURE into a lifestyle for everyone to enjoy.

## WHO WE ARE

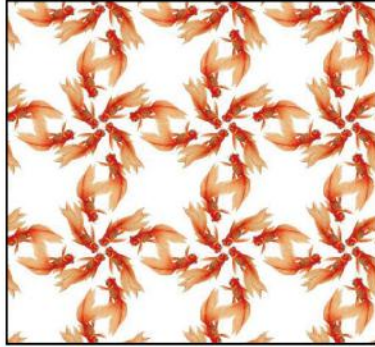
NATURE CREATIVE is an exciting new brand positioning itself to become THE ONLINE NATURE BRAND for Home and Lifestyle.

Search one of the world's largest Digital Archives specializing in NATURE, and shop a new NATURE aesthetic that is modern, exciting, and relevant.

# WHAT WE DO

## DIGITAL

DOWNLOAD IMAGES (JUST LIKE GETTY) TO BE USED FOR BOTH PERSONAL AND COMMERCIAL PURPOSES.



## APPAREL

FASHION THAT CELEBRATES NATURE. NATURE LOVERS UNITE UNDER THE NATURE CREATIVE LABEL.



## DECOR

ART SHIPPED WORLDWIDE, RIGHT TO YOUR DOOR. THERE ARE 3 FRAMING STYLES AND 3 SIZES TO CHOOSE FROM.



# HOW IT WORKS

## 1. SELECT AN IMAGE(S)

Search 100,000's images never seen before...

IMAGE CODE:  
PO7-BT00771



## 2. SELECT A PRODUCT(S)

DIGITAL

APPAREL

DECOR



## 3. ADD TO CART



**\$47.00**

PRODUCT TYPE APPAREL

DIGITAL

DECOR

APPAREL

PRODUCT DEPARTMENT WOMEN

MEN

WOMEN

UNISEX

YOUTH

PRODUCT STYLE

S/S TEE

S/S V-NECK

RACERBACK TANK

CURVY TEE


Size Up to 4000 x 6000 pixels  
13.3" x 20" @300 DPI (JPG format)

ADD TO CART

ADD TO DESIGN BOARD

# CUSTOMIZE YOUR VISION



Click on our Designer Dashboard feature  to customize our images.

## STEP 1

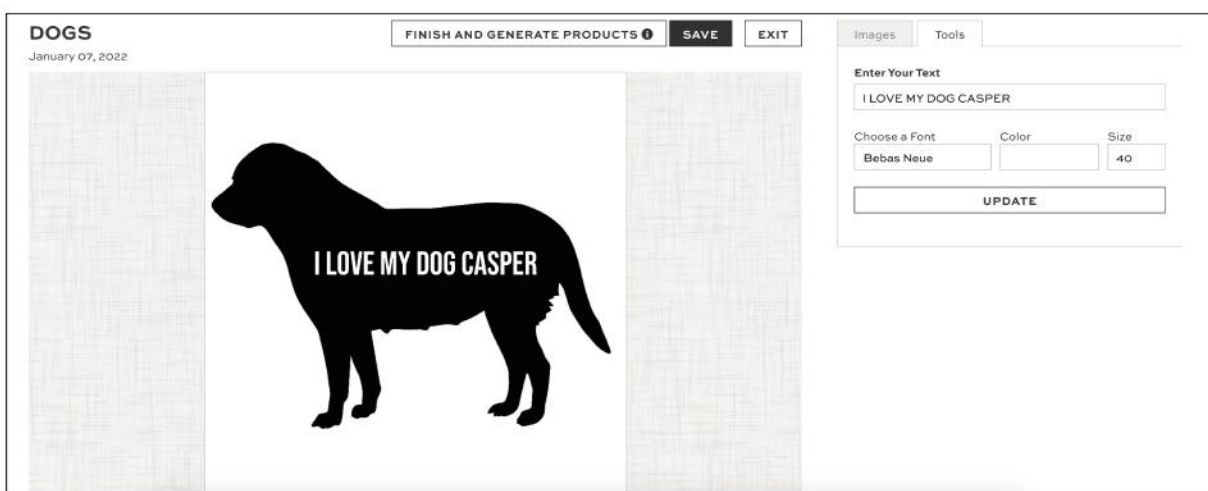
Select image, name your design board, drag your desired image to your new board.

## STEP 2

Customize your own design with different fonts & colors.

## STEP 3

Save image and select the product you want it on.



We have created this new tool to allow YOU to become the ARTIST and to allow YOU to become the DESIGNER.



# A MESSAGE FROM OUR FOUNDER



Dear Fellow NATURE Lovers!

I have been in awe of NATURE ever since my earliest memories have allowed. When I was introduced to TV all I watched was NATURE Programs. When asked what I wanted to do in life and to be honest about it, all I could answer was I loved NATURE.

It has taken me 30 years since then to keep true to my calling and to CREATE a new way to celebrate NATURE everyday.

NATURE CREATIVE is a mega DIGITAL ARCHIVE and SHOPPING PLATFORM celebrating NATURE.

Please enjoy the experience and enjoy a new NATURE aesthetic that is MODERN and EXCITING.

Celebrate NATURE everyday!

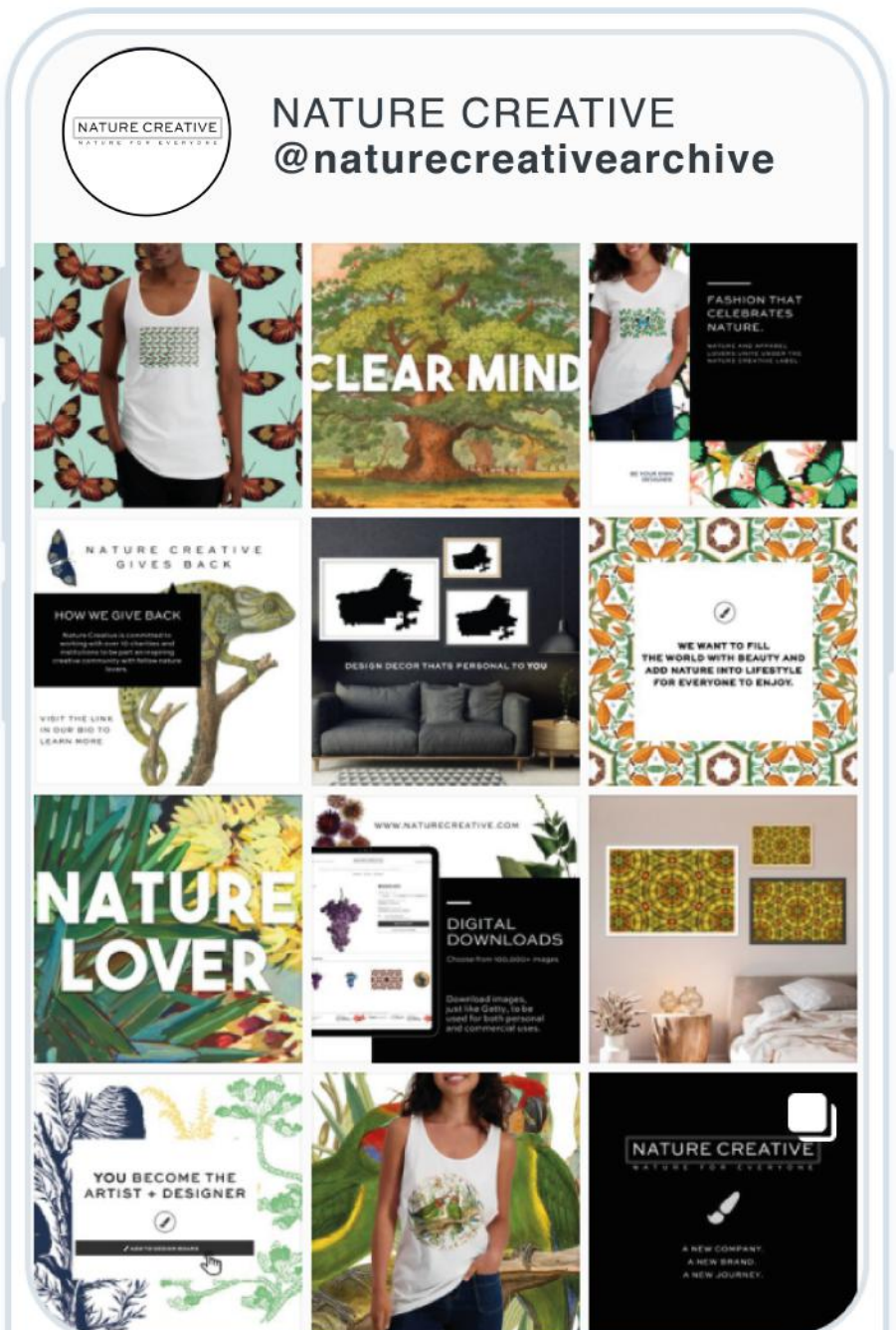
Christopher

# SOCIAL MEDIA

NATURE CREATIVE will be creating a community using our social media platforms so that every NATURE lover can come together and celebrate NATURE everyday.

 @NATURECREATIVEARCHIVE

 @NATURE\_CREATIVE





# OUR COMMUNITY

NATURE CREATIVE works with the following charities and institutions to be part of an inspiring creative community with fellow nature lovers.



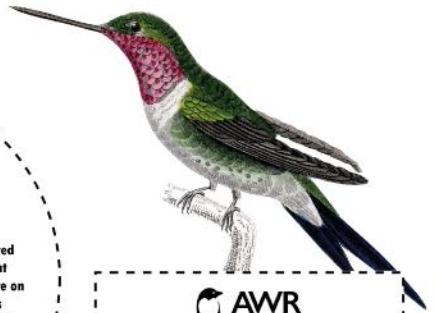
The mission of the American Ornithological Society is to advance the scientific understanding of birds, to enrich ornithology as a profession, and to promote a rigorous scientific basis for the conservation of birds.

ILLINOIS, USA  
<https://americanornithology.org/>



The Royal Botanic Garden, Sydney is a heritage-listed major 30-hectare (74-acre) botanical garden, event venue and public recreation area located at Farm Cove on the eastern fringe of the Sydney Central Business District, in the City of Sydney local government area of New South Wales, Australia. Opened in 1816, the garden is the oldest scientific institution in Australia and one of the most important historic botanical institutions in the world.

SYDNEY, AUSTRALIA  
<https://www.rbg Syd.nsw.gov.au/>



Facilitating and promoting research on the antarctic ecosystem.

OSLO, NORWAY  
<http://www.antarcticwildlife.org/>



The Edible Schoolyard Project is a nonprofit organization dedicated to the transformation of public education by using organic school gardens, kitchens, and cafeterias to teach both academic subjects and the values of nourishment, stewardship, and community. Edible education provides hands-on experiences that connect students to food, nature, and each other; and it systematically addresses the crises of climate change, public health, and social inequality. At its heart is a dynamic and joyful learning experience for every child.

CALIFORNIA, USA  
<https://edibleschoolyard.org/>



Making geologists acquainted with each other, stimulating their zeal, inducing them to adopt one nomenclature, facilitating the communication of new facts and ascertaining what is known in their science and what remains to be discovered.

LONDON, UK  
<https://www.geolsoc.org.uk/>



The mission of the NBI is to promote the sustainable use, conservation, appreciation and enjoyment of the exceptionally rich plant life of South Africa, for the benefit of all people.

CAPE TOWN, SOUTH AFRICA  
<https://www.sanbi.org/>



The National Tropical Botanical Garden (NTBG) is a Hawaii-based not-for-profit institution dedicated to tropical plant research, conservation, and education. It operates a network of botanical gardens and preserves in Hawaii and Florida.

HAWAII, USA  
<https://ntbg.org/>



OUTWARD BOUND

Our mission is to inspire young people to defy their limitations so they become strong, resilient and curious, ready for the challenges of life.

CUMBRIA, UK  
<https://www.outwardbound.org/>



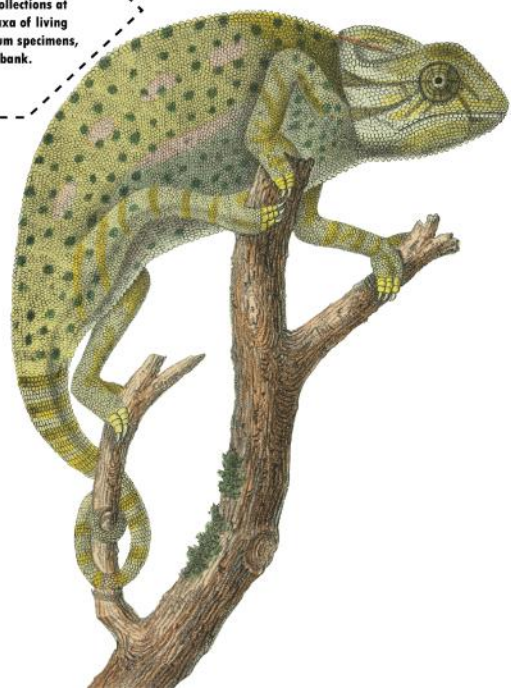
Kew has 40 historically important buildings; it became a UNESCO world heritage site in 2003. The collections at Kew and Wakehurst include over 27,000 taxa of living plants, 8.3 million plant and fungal herbarium specimens, and over 40,000 species in the seed bank.

LONDON, UK  
<https://www.kew.org/>



Green Schoolyards America seeks to transform asphalt-covered school grounds into park-like green spaces that improve children's well-being, learning, and play while contributing to the ecological health and resilience of our cities. We are working to change the norm for school ground design, use, and management so that all children will have access to the natural world in the places they already visit on a daily basis. Our work has a strong equity focus, and prioritizes locations that have the greatest need for educational, environmental, health, and open space improvements.

CALIFORNIA, USA  
<https://www.greenschoolyards.org/>



# FAQS

**1. Can I order everything online?**

Yes.

**2. Can you ship worldwide?**

Yes.

**3. Can I download digital images immediately?**

Yes.

**4. How long does it take to get apparel?**

10 days.

**5. How long does it take to get decor?**

14 days.

**6. Where are the copyright descriptions?**

Under copyright usage at the bottom of our homepage.

**7. Is my shipping calculated when I order?**

Yes.

**8. Can I customize the images?**

Yes.

**9. Am I limited to how many pieces I order?**

No.

**10. Can I order apparel, decor & digital at the same time?**

Yes.

**11. Where is it shipped from?**

California.

**12. Are there commercial use rates?**

Yes, please email [info@naturecreative.com](mailto:info@naturecreative.com).